

11 December 2018

The Hon. Andrew Constance, MP
Minister for Transport and Infrastructure
52 Martin Place SYDNEY NSW 2000

By courier

Dear Minister,

Sydney Harbour HighLine

In March 2017 the Hon. Gladys Berejiklian MP, Premier NSW guaranteed that the Lavender Bay rail line will remain in public hands and established the Sydney Harbour HighLine committee to investigate creating a scenic walking path along this unique stretch of railway land. Ms Felicity Wilson MP for North Shore convened the committee that comprised relevant State Government Departments, community representatives and the committee first met on 28 August 2017.

As you are aware the Sydney Harbour HighLine (SHHL) Association was formed by local residents to secure, for the community and visitors to the area, a walking path between the present northern boundary of Luna Park and Union Street (nr Waverton Station) that will be constructed and operated in parallel with Sydney Train's diminishing use of the current rail corridor.

Ms Felicity Wilson and Mr Howard Collins met with you on 28th August 2018 to report on the committee's progress. You wrote to Ms Wilson on 29th September 2018 encouraging the Sydney Harbour HighLine committee to finalise its work and report to the NSW Government.

At the committee's final meeting on 12th October 2018, the committee asked that the SHHL Association prepare and present the committee's report.

We now have great pleasure in presenting this report.

Chronology

- **7 April 2016:** First community meeting held attended by 153 members of the community together with Ms Marilyn Cameron, representing The Hon Mrs Jillian Skinner MP, member for North Shore and Mayor Jilly Gibson, North Sydney Council at which the concept of the Sydney Harbour HighLine was presented to the community.
- **27 June 2016:** At a community meeting attended by Mr Trent Zimmerman, Federal member for North Sydney, The Hon Mrs Jillian Skinner MP, member for North Shore, Ms Jilly Gibson, Mayor of North Sydney and over 200 residents, the vision for the Sydney Harbour HighLine received unanimous support.
- **16 August 2016:** The Sydney Harbour HighLine Association was incorporated.
- **26 September 2016:** SHHL representatives met with The Hon Mrs Jillian Skinner MP, member for North Shore and Mr Howard Collins, Chief Executive Sydney Trains to discuss the SHHL project.
- **Late 2016:** Further meetings were held between SHHL representatives and Mr Howard Collins.
- **3 February 2017:** SHHL representatives met with Mr Chris Muir, Chief of Staff for the office of Minister for Transport & Infrastructure.
- **6 March 2017:** A further community meeting was held attended by 240 residents.
- **20 March 2017:** The Premier NSW, the Hon. Gladys Berejiklian MP announced "... I can give an iron clad guarantee that a NSW Liberals & Nationals Government will never sell off the land and ensure it remains a community asset in the event it is not needed for railway use... I can also announce the NSW Government will establish a committee to investigate creating a scenic walking track along this unique stretch of railway land."
- **9 June 2017:** Mr Chris Muir advised "... confirm that the Minister and Sydney Trains have agreed that work to create a walking path along the Lavender Bay Spur can commence on the side where tracks have been removed, before the active rail line is closed on the other side of the spur".
- **28 August 2017:** The first meeting of the Sydney Harbour HighLine committee was held. The committee, chaired by Ms Felicity Wilson, comprised representatives from State Government, North Sydney Council, local Precincts and the Sydney Harbour HighLine Association. At this committee meeting Ms Wilson confirmed that the HighLine is the length of rail corridor from Union Street (near Waverton Station) to the present northern boundary of Luna Park.
- **During 2017:** The SHHL Association developed two websites; Sydney Harbour HighLine at <https://www.sydneyharbourhighline.org.au/> and Wendys Secret Garden at <https://www.wendyssecretgarden.org.au/>
- **March and May 2018:** After extensive investigation by Sydney Trains' team and SHHL consultants, the design and initial costs were presented to the committee in March (SHHL Report) and June (Sydney Trains Report).
- **April 2018:** SHHL representatives conducted three meetings at which they presented the SHHL proposal to North Sydney Council Department Heads and Councillors.
- **28 August 2018:** Ms Felicity Wilson and Mr Howard Collins met with the Minister for Transport & Infrastructure.
- **27 September 2018:** Minister for Transport & Infrastructure advised Ms Wilson to finalise the work for the Minister in the form of a report to the NSW Government. This report to include a recommendation on how the project should be delivered.

- **12 October 2018:** The final meeting of the Sydney Harbour HighLine committee was held at which time it was agreed that the SHHL Association would compile and submit the report to the Minister.
- **October & November 2018:** The SHHL representatives conducted further meetings with Sydney Trains. In addition, requests were made by the SHHL representatives to State Government Department members on the committee for any required input into this report.
- **25 October 2018:** The SHHL representatives met with residents from the three Precincts that adjoin the SHHL to advise them of the outcomes above.

The attached presentation confirms:

1. The pathway construction may be undertaken now and will meet the safety requirements of Sydney Trains and current planning codes.
2. The pathway may be operated in conjunction with the ongoing operation of Sydney Trains.
3. A strategic link will be created between Lavender Bay and Waverton accessing the parklands and tourist features of this important precinct that is rich in aboriginal and maritime history.

Design and cost estimates have been completed by Sydney Trains. See Appendix A.

In addition, the SHHL Association has completed independent designs and estimates of costs based on the limited technical information available to it. The cost of the work to date of the SHHL Association has been paid for from members' subscriptions and donations.

Sydney Trains' costs cover development of the Sydney Harbour HighLine in two stages: Stage 1 being Union Street (nr Waverton Station) to Wendys Secret Garden and Stage 2 being Wendys Secret Garden to the present northern boundary of Luna Park. Stage 2 will be constructed once the use of the line by Sydney Trains comes to an end.

Delivery

There are two distinct components to the project: the HighLine walkway and RailCorp / Sydney Trains upgrading and modifications to the existing rail corridor.

Following discussions with Sydney Trains, it is proposed that an experienced Sydney Trains' Project Manager be appointed to coordinate the combined development and to work with a steering committee of representatives from the SHHL Association.

This Development team will be responsible for the next stage of design work and will then progress to tender and delivery stages. Please refer to Appendix B.

Based on discussions with North Sydney Council, providing the project is funded by the NSW State Government, they will lease the HighLine corridor from RailCorp on a long-term basis in a similar manner to the lease arrangements with Wendys Secret Garden.

Timeline

Sydney Trains has not yet provided a timeline for the project. The SHHL Association's Quantity Surveyor suggested a development program of 18 months from approval of funding to completion of works. However, this was provided in March 2018 prior to being aware of the extent of the Sydney Trains' works. Please refer to Appendix C.

The next steps:

The NSW Government, by this year's end, to:

1. confirm its commitment to funding the building of a walkway from Union Street (near Waverton Station) to the present northern boundary of Luna Park along the existing rail corridor - [REDACTED] (see Appendix C); and
2. commit to fund the Sydney Harbour HighLine Association to complete the design brief in consultation with Sydney Trains to the point needed to allow construction to commence - [REDACTED] (see Appendix C).

Thank you for inviting us to submit this report. The report represents 18 months' work of the committee. There is a huge degree of interest in this project which will provide a spectacular harbour walk to the benefit of both Sydneysiders and tourists alike. We look forward to your response by years' end confirming commitment of the NSW Government to funding the Sydney Harbour HighLine.

Yours sincerely



David Bowman

Vice President, Sydney Harbour HighLine Association

Appendices

Appendix A: Cost estimate prepared by Sydney Trains

Appendix B: Sydney Harbour HighLine Project

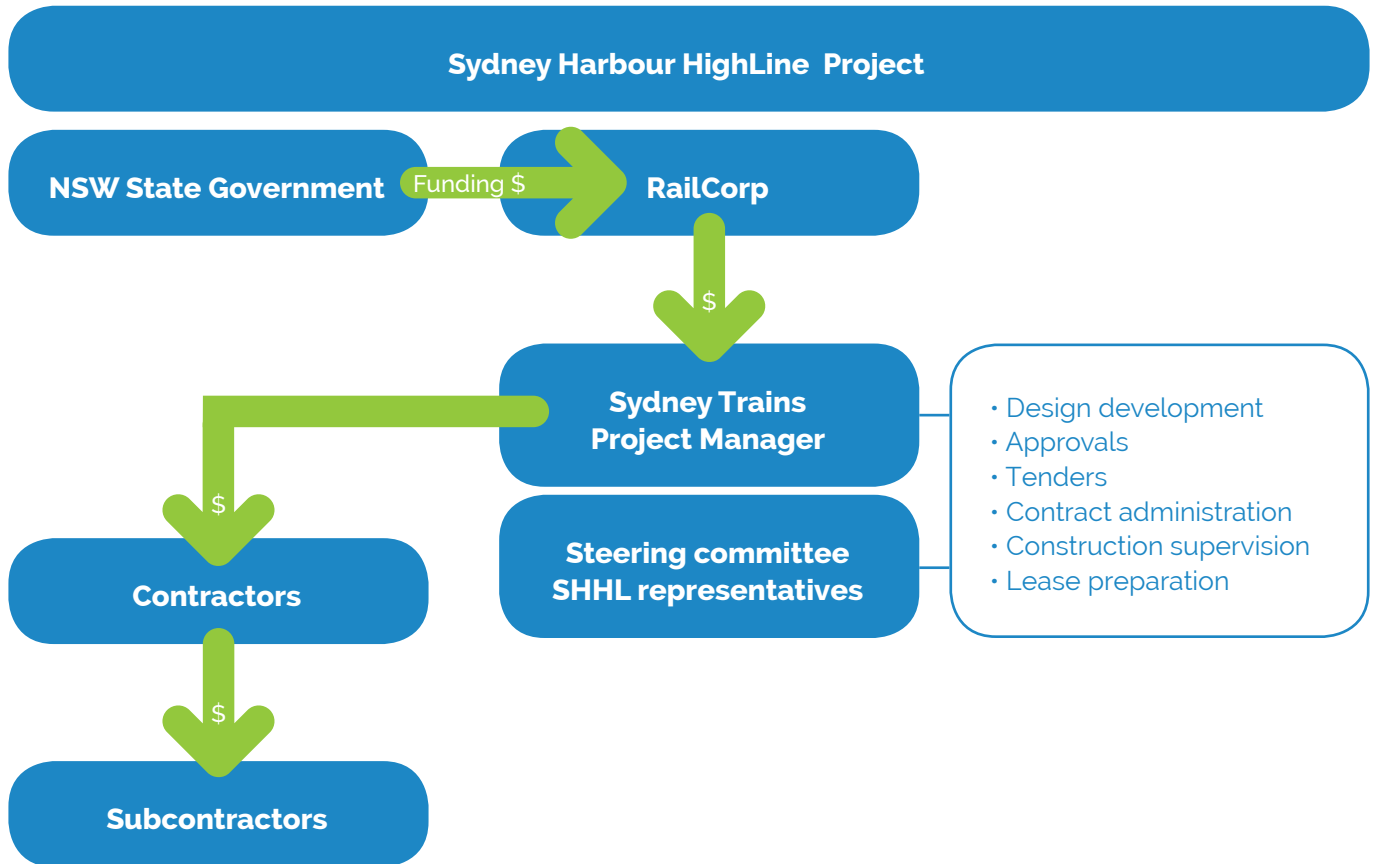
Appendix C: Proposed Timeline at March 2018 (prepared by SHHL Quantity Surveyor prior to information on Sydney Trains' works being available)

Appendix A: Cost estimate prepared by Sydney Trains

Highline Study / Concept Estimate Contingency Class 4 - DRAFT		 		
Date: June 2018 - Rev 4				
Summary		Option 1 Enhanced Urban Fencing	Option 2 Palisade	Option 3 Close Spaced Weld Mesh
DIRECT COSTS				
Tunnel Clean		██████████	██████████	██████████
Tunnel lighting		██████████	██████████	██████████
██████████		██████████	██████████	██████████
██████████		██████████	██████████	██████████
John Street Pedestrian Bridge		██████████	██████████	██████████
Retaining Walls		██████████	██████████	██████████
Access Roads Repairs and Rework		██████████	██████████	██████████
Access Platform & Safe Place		██████████	██████████	██████████
Concrete Path		██████████	██████████	██████████
Fence & Gates		██████████	██████████	██████████
Heritage Platform Works		██████████	██████████	██████████
Track		██████████	██████████	██████████
Signals		██████████	██████████	██████████
Metronet/DTRS		██████████	██████████	██████████
OHWS & OHW		██████████	██████████	██████████
Electrical		██████████	██████████	██████████
Pathway Lighting		██████████	██████████	██████████
Fire Systems		██████████	██████████	██████████
Landscaping (Allowances to select areas only)		██████████	██████████	██████████
DIRECT COSTS		██████████	██████████	██████████
INDIRECTS				
Contractor Prelims , OH & Profit		██████████	██████████	██████████
CONSTRUCTION COSTS		██████████	██████████	██████████
Client Costs		██████████	██████████	██████████
CONTINUE SHHL DESIGN WORK		██████████	██████████	██████████
PROJECT ESTIMATE		P50	██████████	██████████
Escalation				
Contingency / Project Range				
Contingency Class 4	Low	██████████	██████████	██████████
██████████	██████████	██████████	██████████	██████████
		██████████	██████████	██████████
		██████████	██████████	██████████
	TOC P90	██████████	██████████	██████████

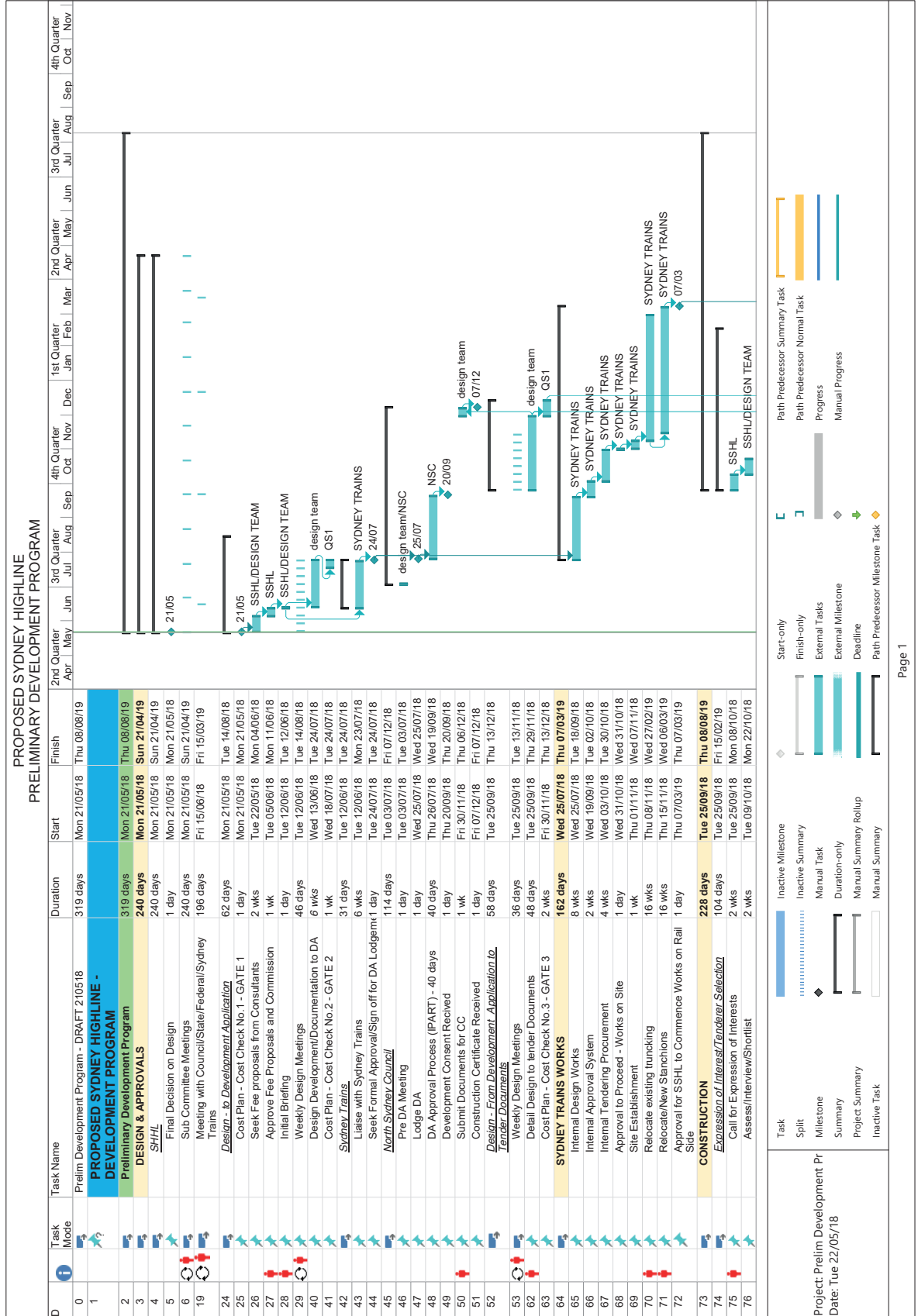
Note 1: Additional costs identified by the SHHL Association Quantity Surveyor

Appendix B: Sydney Harbour Highline Project



Appendix C: Proposed Timeline at March 2018

(prepared by SHHL Quantity Surveyor prior to information on Sydney Trains' works being available)



Appendix C: Proposed Timeline at March 2018

(prepared by SHHL Quantity Surveyor prior to information on Sydney Trains' works being available)

